

MISSISSIPPI GEOLOGICAL SOCIETY *e*BULLETIN

Volume 65

No. 8

April 2017

BOLAND SCHOLASHIPS

DUSTIN JOHNSON AWARD

GEOLOGY OF THE BUCKET BRIGADE

Dr. David T. Dockery, RPG, Office of Geology



Natchez Trace



www.missgeo.com



MGS 2015-2016 BOARD OF DIRECTORS

Officers

President	Cragin Knox	Independent	craginknox@outlook.com	(601) 506-0908
1st Vice President	David Hancock	Roundtree & Assoc.	david@roundtreeinc.com	(601) 355-4530
2nd Vice President	Joe Johnson	Spooner Petroleum	jjohnson@spoonercompanies.com	(601) 969-1831
Treasurer	Bill Bagnall	BLM	wbagnall@blm.gov	(601) 919-4651
Webmaster	Steve Walkinshaw	Vision Exploration	steve@visionexploration.com	(601) 607-3227
Advertising	Matt Caton	Tellus Operating	mcaton@tellusoperating.com	(601) 898-7444
Editor	Matt Caton	Tellus Operating	mcaton@tellusoperating.com	(601) 898-7444

Boland Scholarship

President	David Hancock	Roundtree & Assoc.	(601) 355-4530
Secretary	Neil Barnes	Independent	(601) 948-5279
Members	Dave Cate	Pruet	
	Tony Stuart	Venture Oil & Gas	(601) 428-7725
	James Starnes	DEQ	
	Joe Johnson	Spooner Petroleum	(601) 969-1831
	Bob Schneeflock		

Honorary Membership

Chairman	Charles H. Williams, Jr.	Vaughey & Vaughey	(601) 982-1212
Members	E. Ralph Hines	Moon-Hines	(601) 572-8300
	Jerry Zoble	Independent	

MGS Representatives

AAPG	Maurice Birdwell	Independent	(601) 936-6939
GCAGS	Danny Harrelson	U.S. Army R&D	(601) 634-2685

Other

Environmental	John Ryan	Allen	(601) 936-4440
Historian	Stanley King	Independent	(601) 842-3539



PRESIDENT'S LETTER

Cragin Knox



It's Boland Scholarship time again. At our monthly meeting scheduled for April 13 we will make award presentations to the students that have been selected by the Scholarship committee. A special thanks to Neil Barnes and his committee for their interviews and selections.

Thanks to Dr. Stan Galicki for his presentation on "The Geologic History of Mississippi" at our last meeting. And we thought we only had red dirt and brown dirt and gray dirt in Mississippi. His description "Over the past billion years Mississippi has been torn apart, smashed together, eroded, torn apart again, inundated and buried, and finally uplifted and eroded" really says it all.

Congratulations to all of this years scholarship winners!

Cragin

2016-2017 MGS MEETING SCHEDULE

When	What/Who	Where
September 8, 2016	Fall BBQ	Jackson Yacht Club-5:30pm
October 13, 2016	Deep Lakes in Early Mars—Ezat Heydari	River Hills – 11:30am
November 10, 2016	Tuscaloosa Marine Shale Paul Hackley et al. USGS	River Hills – 11:30am
	MAPL Christmas Party CANCELLED	
January 12, 2017	Jamie Harris—Millsaps College The Geology of Scotland	River Hills – 11:30am
February 9, 2017	Dr. Greg Easson Oil & Gas Research and Education	River Hills – 11:30am
March 9, 2017	The Geology of Mississippi Dr. Stan Galicki Millsaps College	River Hills – 11:30am
April 13, 2017	Scholarship Awards	River Hills – 11:30am
May 11, 2017	Spring Fling	Jackson Yacht Club– 5:30pm



Full house last month for Stan Galicki and “The Geology of Mississippi”

OFFICERS MEETINGS

September 6, 2015
October 11, 2015
November 8, 2015
January 10, 2016
February 7, 2016
March 7, 2016
April 11, 2016
May 9, 2016



LAWRENCE FRANCIS BOLAND



LAWRENCE FRANCIS BOLAND
(1916-1979)

On February 28, after a short illness, Larry Boland died in his sleep, ending the life and career of a good man and friend.

Larry was born in Stone, Kentucky, on August 27, 1916, the only son of Doctor Lawrence F. and Elizabeth L. Boland. Because of illness in the family he spent many of his early years in Florida and West Virginia. Larry attended Williamson High School, Williamson, West Virginia, where he lettered in tennis, basketball, and football, and earned All-State recognition in football.

Upon graduation from high school, Larry attended the University of Kentucky on a football scholarship and became a member of Sigma Chi fraternity. On graduating with a bachelor's degree in English, he moved to St. Paul, Minnesota, to work for the Du Pont Company. It was while working for Du Pont that Larry met Margaret Ann Brisbois, "Peg" to her many friends. They were married June 17, 1945, in St. Paul, Peg's hometown. Larry also worked for Du Pont in Hanford, Washington, where they were involved with the "Manhattan Project." While there, Larry

served as chief of communications for Du Pont.

In 1945, Larry and Peg returned to the University of Kentucky, where he studied geology in graduate school under a fellowship. In 1946, Larry received his bachelor's degree in geology and went to work for the U.S. Geological Survey in Lexington, Kentucky.

In 1947 Larry accepted a position as staff geologist with Amerada in Tyler, Texas, and in 1949 he was transferred to Jackson, Mississippi, as district exploration manager. Larry served in this capacity for 21 years before resigning in 1970 to open an office for Harkins & Company. During his final years as Harkins' exploration manager, Larry was instrumental in the discovery of Cistercian field, Jasper County, and Greens Creek field in Jefferson Davis and Marion Counties, Mississippi.

Larry and Peg were charter members of St. Mary's Catholic Church and were very involved in church activities. They raised eight children, five boys and three girls. All the boys were outstanding athletes and created a dynasty at St. Mary's and St. Joseph's High School not likely to be equaled again. For many years Larry served as the "Voice of the Rebels," announcing all of St. Joseph's home football games.

Larry was a member of the AAPG and was a certified professional geologist. He was a member of long-standing in the Mississippi Geological Society, and served as president of that organization in 1971-72. He also served as program chairman and head of the job placement committee. In April 1978 Larry was elected to honorary membership in the society.

Larry, a true Irishman, was both a passionate and compassionate man and was well-known and respected throughout our industry. He was a strong advocate for those things in which he believed, but was the original "soft touch" for those who needed his help. Larry is truly missed by all of us who were privileged to know him and work with him. He is survived by his wife, eight children, and nine grandchildren.

JERRY E. ZOBLE
and
JAMES R. MCELROY

Jackson, Mississippi
July 1979



SCHOLARSHIPS

ANNOUNCEMENT

The Lawrence F. Boland Memorial Scholarship Fund Trust, Inc. is pleased to announce the 2017 winners of the Lawrence F. Boland Memorial Scholarships and the Dustin Johnson Memorial Scholarship. This year's winners of the Lawrence F. Boland Memorial Scholarships are:

Brooks Ronsandich, Millsaps College

Noah van Hartesveldt, Mississippi State University

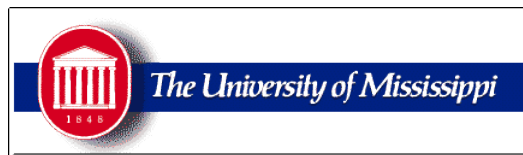
Elizabeth Cardenal, University of Southern Mississippi

Christopher Boucher, University of Mississippi

This year's winner of the Dustin Johnson Memorial Scholarship is **Shana Byrd** from the University of Southern Mississippi.

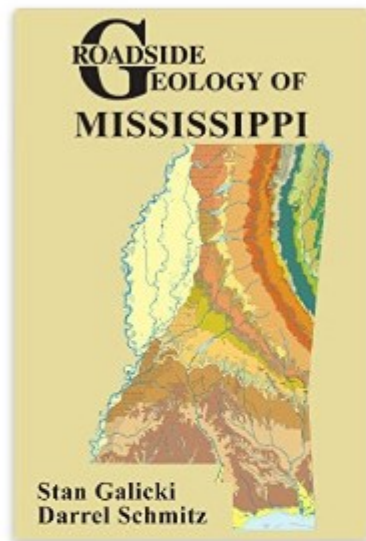
These winners were selected from among outstanding students nominated by their departments.

The award for each scholarship is \$1,000.00 and will be presented next week, Thursday, April, 13th, at the regular lunch meeting of the Mississippi Geological Society. The luncheon will be held at the River Hills Club in Jackson at 11:30 a.m.



AVAILABLE NOW

Books › Travel › United States



[See this image](#)

Roadside Geology of Mississippi (Roadside Geology Series) Paperback –

October 15, 2016

by [Stan Galicki](#) (Author), [Darrel Schmitz](#) (Author)

[Be the first to review this item](#)

#1 New Release in [East South Central US Travel Books](#)

[See all formats and editions](#)

Paperback
\$24.00

3 Used from \$16.94

5 New from \$17.02

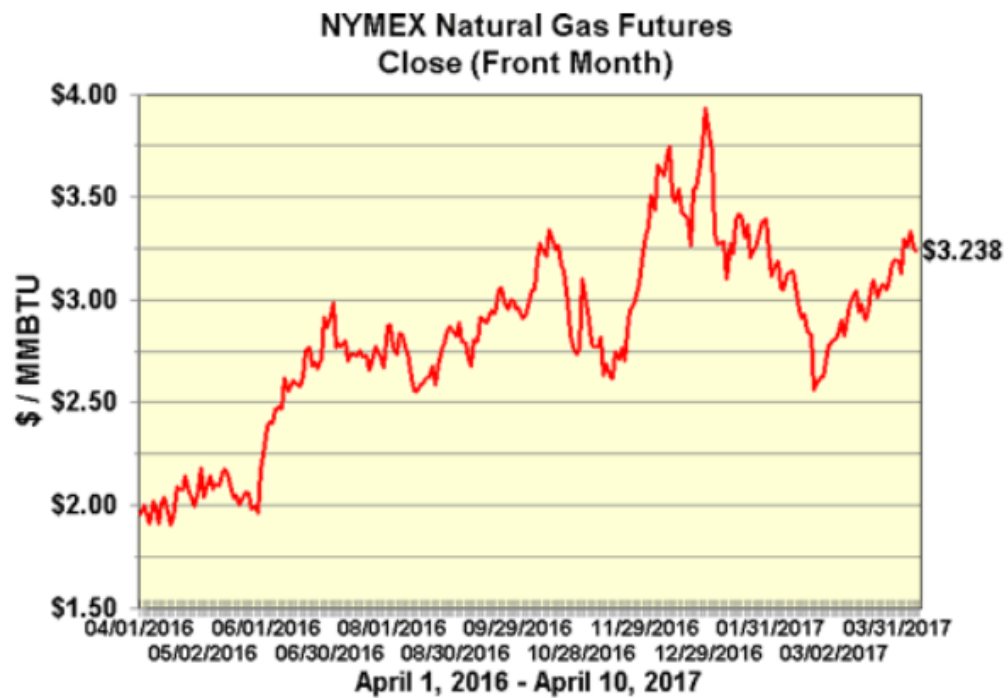
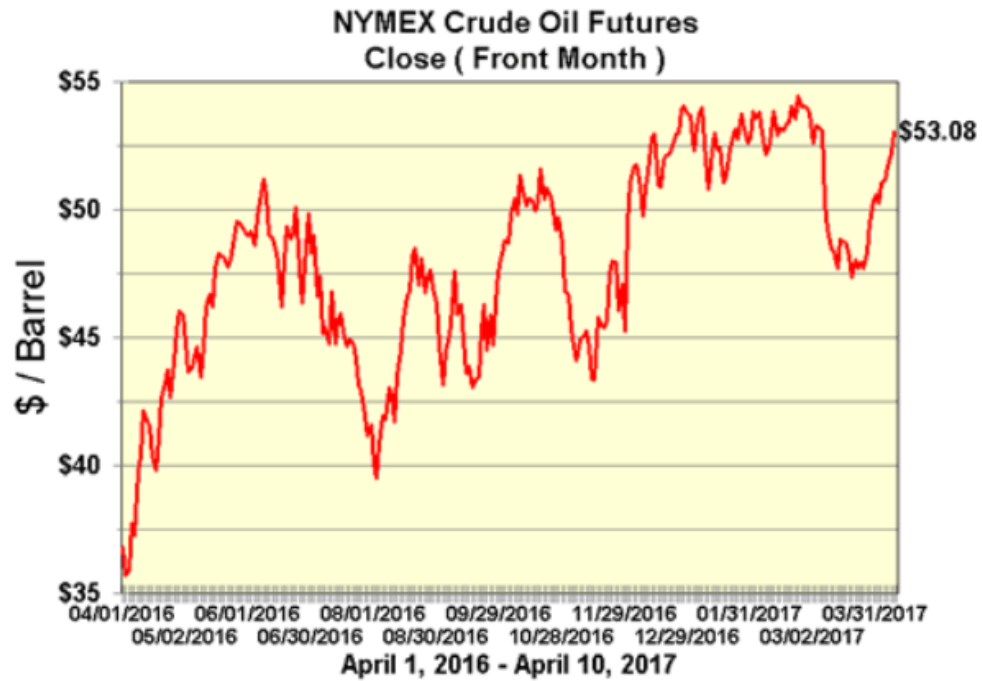
It's a little-known fact, but Mississippi has a volcano. True, it's buried under 2,600 feet of sediment, but it was red hot and active roughly 79 to 69 million years ago, and evidence of its bulging remains are visible in the Jacksonville area.

Mississippi emerged along the edge of a massive tear that

[Read more](#)



OIL & GAS FUTURES





MONTHLY POST

Dr. David T. Dockery III RPG

GEOLOGY OF THE BUCKET BRIGADE

David T. Dockery III, RPG, and James E. Starnes, RPG, Mississippi Department of Environmental Quality, Office of Geology

There are solar/battery powered lights and wildlife crossing signs facing both north and south on the Natchez Trace Parkway just south of Interstate 20 (Figure 1) not seen elsewhere along the Trace.



Figure 1. Solar/battery powered warning lights at wildlife crossing on the shoulder of the south-bound lane of the Natchez Trace Parkway just south of Interstate 20 in Clinton, Mississippi. Picture taken on April 3, 2017.



MONTHLY POST

Dr. David T. Dockery III RPG

Deer crossing signs are modest in comparison. So, have you ever wondered what creatures cross this Clinton section of the Natchez Trace? Here begins the story of “Geology of the Bucket Brigade.” Several species of salamanders make seasonal migrations across portions of the Trace between I-20 and milepost 85. On rainy fall nights there are breeding migrations of Marbled Salamanders, and on rainy winter nights one can expect breeding migrations of Spotted Salamanders. From the last week in October to mid-March there is a migration of Webster’s Salamanders (*Plethodon websteri*), a rare species in Mississippi. To protect these salamander populations from a crushing annihilation by the tires of Trace traffic, Tom Mann of the Mississippi Museum of Natural Science has organized Bucket Brigades. This not a job for everyone. The work is done on wet and often stormy nights when temperatures are above 40 degrees (F) from late September through April (or, for Webster’s Salamanders, even on clear nights when the leaf litter is wet from previous rainfall). Under these conditions from sunset to midnight (and sometimes all night) volunteers scoop salamanders from the road and monitor silt fences (Figure 2) set up to intercept Webster’s Salamanders before they reach the road (Figure 3). Salamanders (and often frogs) are carried across the road in their direction of travel, a direction which will be reversed within a few weeks to several months, depending upon the species involved.



Figure 2. Silt fences placed on east and west shoulders of the Natchez Trace Parkway south of Interstate 20 at Clinton by Tom Mann to capture salamanders migrating across the parkway road. Picture courtesy of Tom Mann.

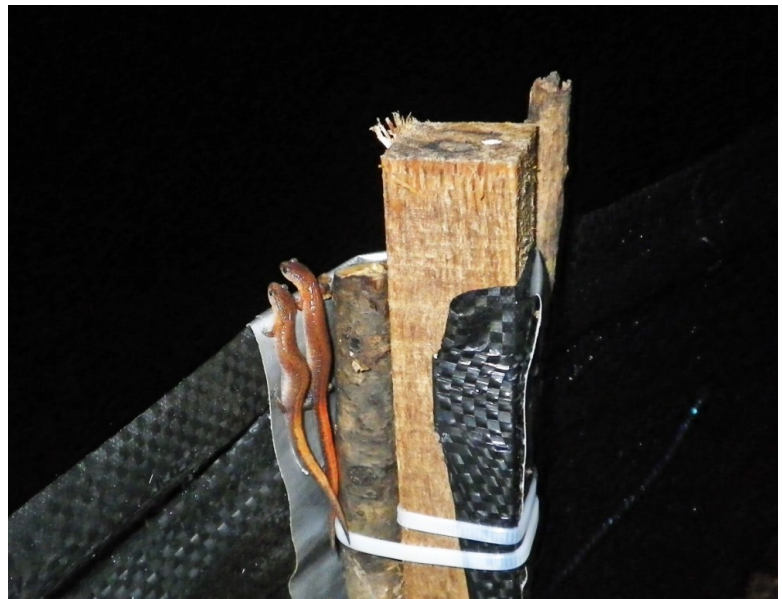


Figure 3. Webster’s Salamanders climbing a silt fence on the east side of the parkway at night and checking out the other side before taking a leap to the ground and crossing the road (if not for the intervention of the Bucket Brigade). Picture courtesy of Tom Mann.



MONTHLY POST

Dr. David T. Dockery III RPG

Mann and his wife Debora (Assistant Professor of Biology at Millsaps College) assume that all of the Webster's Salamanders occupy cracks, crevices, and solution cavities within the Glendon limestone (Figure 4), from May to October, when no salamanders can be found at the surface.



Figure 4. Boulders of Glendon Limestone excavated at the Bruenburg Subdivision in western Clinton, Mississippi, next to the salamander crossing on the Natchez Trace Parkway. Karst cavities can be seen in the limestone. Picture courtesy of Tom Mann.

They also assume that females nest in such spaces, as hatchlings occur nowhere else except at outcrops. Animals do not feed during this long period, and emerge at the surface again, in late October, very skinny following their long fast. They disperse from these over-summer refugia in late fall and early winter, and many reach and cross the Trace, and reverse course and return to the outcrops in late winter and early spring. Figure 5 shows a year-old salamander in damp leaf-litter from beneath a rock ledge on Lindsey Creek east of the Natchez Trace. James Starnes, who has mapped the Vicksburg Group, including the Glendon Limestone, provided Mann additional limestone localities that might contain undiscovered Webster's Salamander populations.



MONTHLY POST

Dr. David T. Dockery III RPG

Figure 5 shows a year-old salamander in damp leaf-litter from beneath a rock ledge on Lindsey Creek east of the Natchez Trace. James Starnes, who has mapped the Vicksburg Group, including the Glendon Limestone, provided Mann additional limestone localities that might contain undiscovered Webster's Salamander populations.



Figure 5. Left: Ledge of Glendon Limestone on Lindsey Creek east of the Natchez Trace Parkway. Right: A year-old Webster's Salamander from wet leaf litter beneath the ledge at left. Pictures courtesy of Tom Mann.



MONTHLY POST

Dr. David T. Dockery III RPG

The National Park Service (NPS) met with the Mississippi Department of Environmental Quality's Office of Geology (MDEQ-OG) on March 21-23, 2017, to discuss a cooperative effort to map the geology of the Natchez Trace Parkway at a scale of 1:24,000. This meeting included a fieldtrip on March 23 along the Trace from Clinton to Natchez. Figure 6 shows NPS, MDEQ Office of Geology, and other personnel at a Glendon Limestone outcrop on Lindsey Creek not far from the exposure in Figure 5. Pictured from left to right are: (1) Bruce Heise, NPS Program Manager of the Geologic Resources Division, (2) Tyler Berry, MDEQ-OG, (3) Dr. Lisa McInnis, NPS Chief of Resource Management, Natchez Trace Parkway, Tupelo, Mississippi, (4) Sara Strickland, Natural Resource Program Manager at the Vicksburg National Military Park, (4) Paul Parrish, MDEQ-OG, (5) Andrew Newcomb, MDEQ-OG, and (6) Dr. Darrel Schmitz, Department of Geosciences at Mississippi State University.



Figure 6. Glendon Limestone on Lindsey Creek on the east side of the Natchez Trace Parkway and just south of Interstate 20 in Hinds County, Mississippi. Left to right, Bruce Heise (GRD), Tyler Berry (MOG), Dr. Lisa McInnis (NATR), Sara Strickland (VICK), Paul Parrish (MOG), Andrew Newcomb (MOG), and Dr. Darrel Schmitz (MSU). Picture taken on March 23, 2017.



MONTHLY POST

Dr. David T. Dockery III RPG

Glendon Limestone outcrops used seasonally by Webster's Salamander populations are shown as red dots in Figure 7.

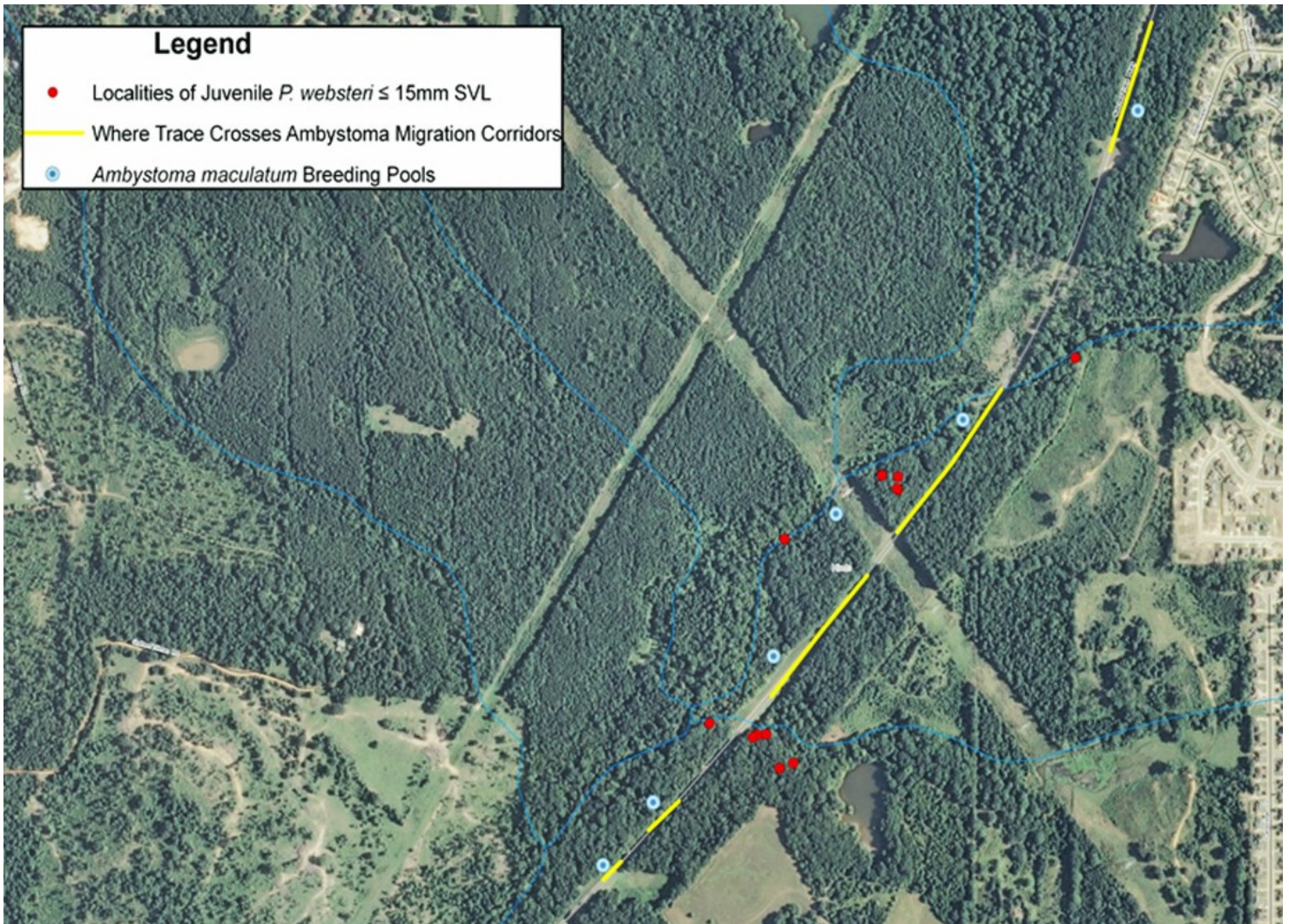


Figure 7. Red dots mark the Glendon Limestone outcrop zones which serve as essential egg-laying and over-summer habitat for Webster's Salamander populations along the Natchez Trace Parkway. Image courtesy of Tom Mann and Aaron Francois.

Shreveport Geological Society

NINTH ANNUAL GEOLOGY AND WINE DINNER MEETING

"The Geology and Wine of Texas"

April 21, 2017

Petroleum Club of Shreveport, 16th Floor

Reception – 6:30 p.m.

Presentations & Dinner – 7 p.m.

with

Kevin Hill, geophysicist

and featured guests

Paul and Merrill Bonarrigo

[Messina Hof Winery](#)

winemakers and founders

Fine Texas wines and cuisine – \$85 per person

Seating is limited to the first 100 paid reservations

Tables of 8 are available

If you have already made your reservation, thank you. If not, we highly recommend you reserve now, as seats are going fast!

RESERVE ONLINE NOW

Reservations can also be made by check to

the Shreveport Geological Society

and mailed to

Hill Geophysical Consulting,

415 Texas St., Ste. 200

Shreveport, LA 71101

Call 318-221-3329 for more information.



GEOLOGY POST

ARTICLES, PAPERS or NEWS?

ATTENTION!!!!!! Industry, Professors and Students:

I am adding a dedicated section that includes more content from the industry and our schools.

Submissions can include anything from professional papers, thesis abstracts, job opportunities to pictures. Anything!!!!

If you have any information or news you would like to share with the Society **PLEASE** email them to the MGS Editor at:

mcaton@tellusoperating.com

Thanks & Regards,

Matt Caton
Editor



2016-2017 BOLAND FUND DONATIONS

**Maurice Birdwell
Joe White
Bob Schneeflock
Kaci Myers & Family
Ruth Johnson
Melissa Perry
Alicia Perry
Katie Perry
Katelin Thompson
Jessica Wagner & Family
Jena Giardina & Family
Ty Wade
J. D. Mallory
Mai Truong
Reagan Byrd
Dave Cate
Jacob Pngetti
Clayton Johnson
William and Elizabeth Patterson
Bill and Judy Boland
Brenda Kirkland
Tony Stuart
I. Meade Huffort**

Thanks for your generous donations to the 2016-2017 Boland Fund

GEO LINK POST

USGS TAPESTRY OF TIME AND TERRAIN <http://tapestry.usgs.gov> The CCGS is donating to all of the 5th and 6th grade schools in the Coastal Bend. Check it out—it is a spectacular map. You might want a framed one for your own office. The one in my office has glass and a metal frame, and it cost \$400 and it does not look as good as the ones we are giving to the schools. Call Owen 510-6224 if you want one for your office for \$150. Duncan, Mike, Chris, Dave, Bob Randy, Seb., Kevin, Ken, Craig, Patrick, Robert.

FREE TEXAS TOPO'S <http://www.tnris.state.tx.us/digital.htm> these are TIFF files from your state government that can be downloaded and printed. You can add them to SMT by converting them first in Globalmapper. Other digital data as well.

FREE NATIONAL TOPO'S [http://store.usgs.gov/b2c_usgs/b2c/start/\(xcm=r3standardpitrex_prd\)/.do](http://store.usgs.gov/b2c_usgs/b2c/start/(xcm=r3standardpitrex_prd)/.do) go to this webpage and look on the extreme right side to the box titled TOPO MAPS DOWNLOAD TOPO MAPS FREE.

<http://www.geographynetwork.com/> Go here and try their top 5 map services. My favorite is 'USGS Elevation Date.' Zoom in on your favorite places and see great shaded relief images. One of my favorites is the Great Sand Dunes National Park in south central Colorado. Nice Dunes.

<http://antwrp.gsfc.nasa.gov/apod/astropix.html> Astronomy picture of the day — awesome. I click this page everyday.

<http://www.spacimaging.com/gallery/ioweek/iow.htm> Amazing satellite images. Check out the gallery.

<http://www.ngdc.noaa.gov/seg/topo/globegal.shtml> More great maps to share with kids and students.

www.geo.org Don't forget we have our own web page.

<http://micro.magneet.fsu.edu/primer/java/scienceoptiscu/owersofl0/>

<http://asterweb.jpl.nasa.gov/galery/default.htm> Great satellite images of volcanoes

<http://terra.nasa.gov/gallery/> More here

www.ermapper.com They have a great free downloadable viewer for TIFF and other graphic files called ER Viewer.

www.drillinginfo.com This is an incredible (subscription) well and completion data service for independents. Can be demo'ed for free.

<http://terraserver.com/> Go here to download free aerial photo images that can be plotted under your digital land and well data. Images down to 1 meter resolution, searchable by Lat Long coordinate. Useful for resolving well location questions.

<http://www.fs.fed.us/gpnf/volcanocams/msh/> This is a live cam of Mt. St. Helens refreshed every 5 minutes. At the bottom are old videos of past eruptions in this cycle. It is worth a watch especially now.



MGS HONORARY MEMBERS

Esther Applin*

Verne Culbertson *

David C. Harrell*

Dudley J. Hughes*

Walter P. Jones*

Winnie McGlammery*

Maurice E. Miesse*

Marvin E. Norman*

Thurston Connell Rader*

Henry Toler*

Charles H. Williams

David Cate

Paul Applin*

H. Leroy Francis*

Oleta R. Harrell*

Urban B. Hughes*

Harold Karges*

Thomas McGlothin*

Emil Monsour*

Marvin L. Oxley*

Baxter Smith*

H. Vaughn Watkins

Jerry Zoble

Stanley King

Lawrence F. Boland*

Jim Furrh*

Ralph Hines

Wendell B. Johnson *

Wilbur H. Knight*

Frederic F. Mellen*

William H. Moore*

Richard R. Priddy*

Harry V. Spooner

Stewart W. Welch*

Julius Ridgeway

*** deceased**

MEMBERSHIP APPLICATION / RENEWAL FORM

MISSISSIPPI GEOLOGICAL SOCIETY

P.O. BOX 422, JACKSON, MISSISSIPPI 39205-0422

2016-2017

Membership year is June through May

New Membership (\$20/yr)____ Renewal (\$20/yr)____ Student (FREE)____ Associate (\$20/yr)____

Boland Scholarship Fund Donation \$ _____ Total Amount Enclosed \$ _____

Last Name: _____ First: _____ MI: _____

Mailing Address: _____

Office Phone: _____ Home Phone: _____ FAX: _____

E-mail Address: _____

College/University Attended: _____

Degree(s) Obtained and Year(s) Awarded: _____

Professional Associations, Certifications, & Licenses: _____

MGS ADVERTISING ORDER FORM

September 2016 – May 2017

I. Bulletin Advertisements:

<u>Size</u>	<u>Rate/Year</u>	<u>Amt. Remitted</u>
Full Page Ad (6" x 8")	\$500	\$ _____
1/2 Page Ad (6" x 4")	\$300	\$ _____
1/4 Page Ad (3" x 4")	\$200	\$ _____
Business Card Ad (1 1/2" x 3")	\$100	\$ _____
Professional Listing (1/2" x 3")	\$ 50	\$ _____

II. Web Page Advertisements (www.missgeo.com):

<u>Type of Web Page Ad</u>	<u>Rate/Year</u>	<u>Amt. Remitted</u>
Front Page Sponsor (Banner Ad – limit of 5)	\$500	\$ _____
Second Page Banner Ad	\$250	\$ _____
Professional Listing/Link	\$100	\$ _____

(Note: Please contact Steve Walkinshaw at (601) 607-3227 or mail@visionexploration.com for details concerning placing your ad on the MGS web site.)

Total Remitted \$ _____

Please make checks payable to the Mississippi Geological Society. If you have any questions, contact Matt Caton at (601) 898-7444 or mcaton@tellusoperating.com



2016-2017 MGS MEMBERS

Bill Bagnall	Frank Heitmuller	Jacob Pongetti
Kimberly Barfield	Robert Herr	Mark Puckett
Larry Baria	David Higgenbotham	Jessica Reynolds
Robert Berry	David Hilton	Michael Rohrer
Maurice Birdwell	Todd Hines	Brooks Rosandich
Michael Bograd	I. Meade Hufford	Bob Schneeflock
Keith Bowman	Richard Ingram	Thomas Seitz
Chris Bowen	Kevin Jeffreys	George Self
Jared Bullock	Clayton Johnson	Jeremi Simmons
Alvin Byrd	Joe Johnson	Charles Smith
Regar Byrd	Karl Kaufmann	George Smith
Dawn Bissell	Courtney Killian	Jimmy Sparks
Randy Bissell	Brenda Kirkland	Joe Stearns
Matt Caton	Cragin Knox	James Stephens
Krista Clark	Christopher Kyler	Jay Stewart
Paul Day	Ed Leigh	Lindsey Stewart
David Dockery	Cody Lenert	Tony Stuart
Jac Douglas	Howard Lowery	Ed Sticker
Kalli Dubois	Ken Magee	Stan Thieling
Dave Easom	Conner McCluer	Sid Thompson
Rick Ericksen	Joe McDuff	Andy Sylte
Jo Everett	Jim Michael	Tom Sylte
Jim Files	David Miller	John Sullivan
Stan Galicki	Jack Moody	Watts Ueltschey
Bob Gaston	Charlie Morrison	Steve Walkinshaw
Roy Geoghegan	Patrick Moseley	Ricky Warren
David Handcock	Zack Musselman	Robert Weyman
Austin Harris	Jess New	Joe White
James Harris	James Nix	Maya Willis
Bill Haworth	James Norris	William Young

***This list is updated monthly. Please contact Bill Bagnall if you have questions.**

MILBIRD RESOURCES, LLC

Oil & Gas Exploration

Maurice N. Birdwell

Managing Partner

AAPG Certified Petroleum Geologist

Reg. Prof. Geol. Ark. La. Miss. Tex

2043 Oak Ridge Drive
Pearl, MS 39208

601.936.6939
mnbirdwell@comcast.net

Joe R. White, Jr.

Petroleum Geologist

8505 Dogwood Trail
Haughton, LA 71037
Cell. 318-423-9828
Hm. 318-949-3539
Available for Consulting

AAPG CPG #5580
MS RPG #0097
LA CPG #345
Jwhite1362@aol.com
Joerjrw@gmail.com

PRUET OIL COMPANY LLC

Oil & Gas Exploration

217 W. Capitol St.
Jackson, MS 39201

601-948-5279
dcate@pruet.com

Joseph H. McDuff Geologist

351 Chapel Loop
Mandeville, LA 70471
985.845.9430
jhmcduff@charter.net



Marlin
EXPLORATION LLC

Jon Q=Petersen, *President*

Autie T. Orjias, *V. P. / Land Manager*

Dean Giles, *Secretary / Treasurer*

S. Cody Lenert, *Geologist*

Ryan Q=Petersen *Land*

(318) 222-8406
Fax (318) 222-6061

401 Edwards Street, Suite 1200
Shreveport, LA 71101

P. O. Box 1367
Shreveport, LA 71164

Email:
mei@marlinexploration.com

BRUNINI

WATTS C. UELTSCHY
ATTORNEY

OFFICE (601) 960.6871 FAX (601) 960.6902

E-MAIL WATTS@BRUNINI.COM | WWW.BRUNINI.COM

BRUNINI, GRANTHAM, GROWER & HEWES, PLLC
ATTORNEYS AT LAW

190 EAST CAPITOL STREET SUITE 100 JACKSON, MS 39201
P.O. DRAWER 119 JACKSON, MS 39205

Energy Land Services

Oil & Gas Leases

I. Meade Hufford, CPL

Owner

P. O. Box 302
144 Wharton Grove Ln
Weems, VA 22576

Phone: 804-438-5852

Fax: 804-438-9043

Cell: 713-705-7235

hufford1913@aol.com



MGS PAST PRESIDENTS

1939-1940	Henry N. Toler	1973-1974	Larry Walter
1940-1941	Urban B. Hughes	1974-1975	W. E. "Gene" Taylor
1941-1942	J. Tom McGlothlin	1975-1976	Jerry E. Zoble
1942-1943	Dave C. Harrell	1976-1977	P. David Cate
1943-1944	K. K. "Bob" Spooner	1977-1978	Sarah Childress
1944-1945	L. R. McFarland	1978-1979	Les Aultman
1945-1946	J. B. Story	1979-1980	Philip R. Reeves
1946-1947	Frederic F. Mellen	1980-1981	Marshall Kern
1947-1948	H. Lee Spyres	1981-1982	Stephen Oivanki
	Robert D. Sprague	1982- 1983	James W. "Buddy" Twiner
1948-1949	Robert D. Sprague	1983- 1984	Charles H. Williams
1949-1950	E. T. "'Mike" Monsour	1984- 1985	C. Kip Ferns
1950-1951	J. Tate Clark	1985-1986	Steven S. Walkinshaw
	Charles E. Buck	1986-1987	J. R. "'Bob" White
1951-1952	George W. Field	1987-1988	Harry Spooner
1952-1953	James L. Md11in, Jr.	1988-1989	Stanley King
1953-1954	Wilbur H. Knight	1989-1990	Stan Galicki
1954-1955	A. Ed Blanton	1990-1991	E. James Files, Jr.
1955-1956	Gilbert A. Talley	1991-1992	Stephen L. Ingram, Sr.
1956-1957	Ben Ploch	1992-1993	Michael Noone/Stanley King
1957-1958	Emil Monsour	1993-1994	Brian Sims
1958-1959	Charles Brown	1994-1995	C. W. "Neil" Barnes
1959-1960	M. F. Kirby	1995-1996	Lester Aultman
1960-1961	Rudy Ewing	1996-1997	Jack S. Moody
1961-1962	Xavier M. Franscogna	1997-1998	George B. Vockroth
1962-1963	Robert B. Ross	1998-1999	Rick L. Ericksen
1963-1964	William A. Skees	1999-2000	Stanley King
	Marvin Oxley	2000-2001	John C. Marble
1964-1965	James F. Bollman	2001-2002	Andrew T. Sylte
1965-1966	Sankey L. Blanton	2002-2003	Aaron Lasker
1966-1967	Alan Jackson	2003-2004	John G. Cox
1967-1968	Julius M. Ridgway	2004-2005	James E. Starnes
1968-1969	Edward D. Minihan	2005-2006	Todd Hines
1969-1970	Kevin E. Cahill	2006-2007	Bob Schneeflock
1970-1971	John Lancaster	2007-2008	Tony Stuart
1971-1972	Larry Boland	2008-2009	Lisa Ivshin
1972-1973	Charles Barton	2009-2010	Joe Johnson
		2010-2011	Brian Sims
		2011-2012	Stanley King
		2012-2013	Jim Files
		2013-2014	Neil Barnes
		2014-2015	Ezat Heydari
		2015-2016	Jack Moody