

FRASCOGNA

DIRECTORY

WITH

PHOTOGRAPHS



MISSISSIPPI
GEOLOGICAL SOCIETY

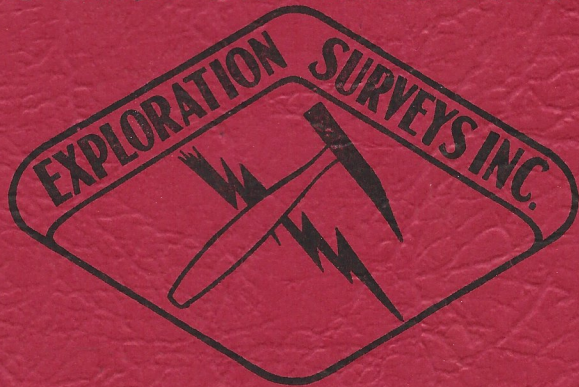
MAY, 1958



SHELBY D. PITTS

Representing

Search the Earth with



EXPLORATION SURVEYS INC.

5615 Daniels Ave.
Dallas, Texas

P. O. Box 1404
Jackson, Miss.

SEISMOGRAPH

GRAVITY

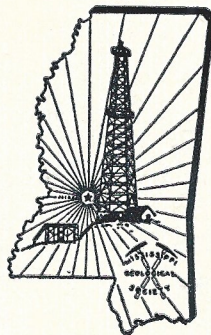
MAGNETICS

FRASCOGATA

DIRECTORY

WITH

PHOTOGRAPHS



MISSISSIPPI GEOLOGICAL SOCIETY

MAY, 1958

TABLE OF CONTENTS

Directory of Organization	5
Past Presidents and Vice Presidents	4
Regular Committees	6
Special Committees	7
Alphabetical Photo Roster	9
Cross Reference by Companies	55

INDEX TO ADVERTISERS

Baroid Division, National Lead Co.	54
Delta Exploration Co.	Inside Back Cover
Engineering Service Co.	71
Exploration Surveys, Inc.	Inside Front Cover
Geolograph	68
Hutchinson Bag Co.	67
Hycalog, Inc.	68
Milner-White Oil Co.	70
Mississippi Geological Society	66
Neely Blue Print Co.	69
Ridgways	Outside Back Cover
Schlumberger	8
Tobin Aerial Surveys	71
United Geophysical	70
A. W. Williams Drilling Co.	69

PAST PRESIDENTS AND VICE-PRESIDENTS

YEAR	PRESIDENT	VICE-PRESIDENT
1956-57	Ben W. Ploch	Emil Monsour
1955-56	Gilbert A. Talley	E. H. Rainwater
1954-55	A. E. Blanton	L. C. Powell
1953-54	Wilbur H. Knight	A. E. Blanton
1952-53	James L. Martin, Jr.	Stan W. Totten
1951-52	George W. Field	F. T. Holden W. E. Sistrunk
1950-51	C. E. Buck	J. Tate Clark J. Tate Clark
1949-50	E. T. "Mike" Monsour	C. E. Buck
1948-49	R. D. Sprague	Carl F. Grubb
1947-48	H. L. Spyres	R. D. Sprague R. D. Sprague
1946-47	F. F. Mellen	J. B. Wheeler
1945-46	J. B. Storey	F. F. Mellen
1944-45	L. R. McFarland	J. B. Storey
1943-44	K. K. Spooner*	Lyman C. Dennis
1942-43	D. C. Harrell	L. R. McFarland
1941-42	J. T. McGlothlin	D. C. Harrell
1940-41	Urban B. Hughes	J. T. McGlothlin
1939-40	Henry N. Toler	Urban B. Hughes

*Deceased

DIRECTORY OF ORGANIZATION

1957-58

DIRECTORY COMMITTEE

Charles Giffin	Chairman
A. E. Blanton	Advertising
James B. Furrh, Jr.	Member
Dean M. Miller	Layout

Society Executive Council

President	
Emil Monsour	Sun Oil Company
Vice President	
Gerald K. Anderson	Ohio Oil Company
Treasurer	
Charles E. Brown	Magnolia Petroleum Company
Secretary	
William D. Stinson	Lion Oil Company
Program Chairman	
William J. Nugent	Drilling & Exploration Co., Inc.
Past President	
Ben W. Ploch	Skelly Oil Company

REGULAR COMMITTEES

A.A.P.G.	Nomenclature Committee
William J. Nugent, Chmn. (Dist. Representative)	Charles G. Bilberry, Chmn. Gerald K. Anderson
Emil Monsour (Dist. Representative)	Verne Culbertson R. V. Ewing
A. E. Blanton	H. M. Morse
Wilbur H. Knight	Boyd Thompson
Henry N. Toler	
Entertainment Committee	Projection Committee
Claude D. Smith, Chmn. Glenn Clark H. Leroy Francis	Armando T. Ricci, Chmn. James Perkins
Program Committee	Publications Committee
Wm. J. Nugent, Chmn. Gerald K. Anderson Gene Davis	Charles E. Brown, Chmn.
Dean Miller	Publicity Committee
R. D. Sims	Charles Giffin, Chmn.
Robert Violette	James B. Furrh, Jr.

SPECIAL COMMITTEES

Bowling Committee	Paul Fitzgerald, Asst. Advertising Mgr.
A. E. Blanton, Chmn.	
Boy Scout Merit Badge Committee	Preservation of Cores and Samples
George Thomas, Chmn. Baxter L. Smith	Claude D. Smith, Chmn. J. S. Attaya Frederick F. Mellen Elmer M. Rice Henry N. Toler
Cenozoic Committee	
Dudley Hughes, Chmn. Emmett R. Adams Elmer Rice George White	Quarterly News Bulletin
Field Trip Committee	William H. Moore, Chmn. Ed Minahan George White
Harold D. Baker, Chmn. Emmett R. Adams Charles G. Bilberry Don Franklin Ray Frisby Robert Jacobs	Reference Book Committee
G.C.A.G.S. Committee	Verne L. Culbertson, Chmn. Charles Barber Roy Benke A. E. Blanton Charles Brown Gene O. Davis X. M. Frascogna William J. Nugent Ben W. Ploch C. R. Scurlock Gilbert A. Talley
Emil Monsour, Rep. Gerald K. Anderson, Alternate Emmett R. Adams, Associate Editor	

NO OTHER ELECTRIC LOG IS

"just like"

A SCHLUMBERGER

because...

no other electrical log has the
background of experience
in design, operation and
interpretation gained in more
than 1,000,000 field operations.

SCHLUMBERGER

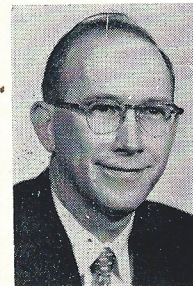
THE EYES OF THE OIL INDUSTRY



ADAMS, EMMETT R.
Shell Oil Co.
Louisiana State University, B.S.



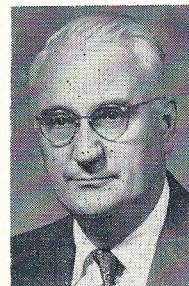
ALEXANDER, CLYDE W.
Consulting Geologist
Texas Christian University, B.S.



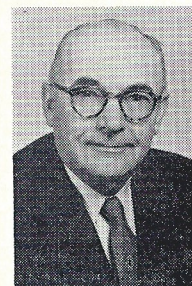
ADAMS, W. M.
Tidewater Oil Co.
Texas A & M College, B.S.



ALEXANDER, RUSSELL J.
The California Co.
University of Oklahoma, M.S.



AIMER, J. D.
Pan American Petro. Corp.
Southern Methodist University, B.A.



ALLEN, B. W.
Honolu'u Oil Corp.
Syracuse University



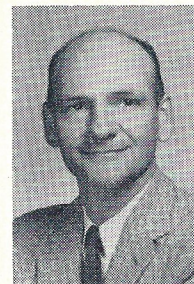
ALLRED, W A
Shell Oil Co.
University of Mississippi, B.A.



APPLIN, ESTHER R.
U. S. Geological Survey
Univ. of California, A.B. & M.A.



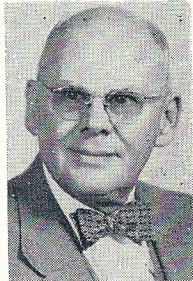
ASHMAN, JOHN M.
Lion Oil Co.
University of Nebraska, A.B.



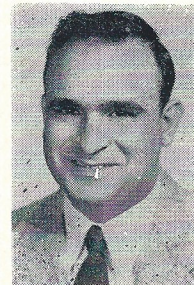
BARBER, CHARLES C.
Sinclair Oil & Gas Co.
Mississippi State College, B.S.



AL REFAI BADIR
Gulf Oil Corp.
University of Arkansas, B.S.



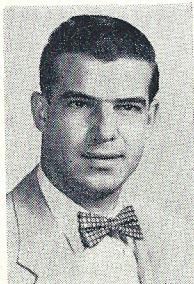
APPLIN, PAUL L.
U. S. Geological Survey
Dartmouth College, A.B.
Yale University,



ATTAYA, JAMES S.
Consulting Geologist
University of Mississippi, B.S. & M.S.



BARTON, CHARLES A.
Skelly Oil Co.
Millsaps College, B.S.
University of Illinois, M.S.



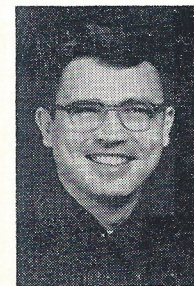
ANDERSON, GERALD K.
The Ohio Oil Co.
University of Illinois, B.S.
Texas Tech. College, M.S.



ARRINGTON, ROBERT N.
Continental Oil Co.
University of Texas, B.S. & M.A.



BAKER, HAROLD D.
Sun Oil Co.
Louisiana State University, B.S.



BEAM, RICHARD A.
Chevron Oil Co.
University of Kansas, B.S.



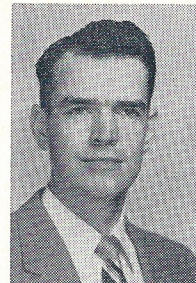
BENKE, ROY
Midstates Oil Co.
University of Mich'gan, B.S.



BLAND, FRANCIS X.
The California Co.
Yale University, B.S.
University of Kansas



BOUNDS, B. D.
Phillips Petroleum Co.
Texas Tech. College, B.S.



BROWN, CHARLES E.
Magnolia Petroleum Co.
Centenary College, B.S.
Louisiana State University, M.A.



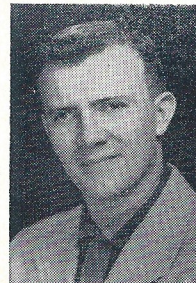
BERGMAN, DONALD R.
The California Co.
College of Wooster, B.A.
University of Minnesota, M.S.



BLANTON, A. E.
Sun Oil Co.
University of Chattanooga, B.S.
University of Tennessee



BOWMAN, RICHARD V.
Pan American Petro. Corp.
Oklahoma State University
Colorado School of Mines
University of Tulsa, B.S.



BROWN, DONALD D.
Continental Oil Co.
University of Oklahoma, B.S.



BILBERRY, C. G.
Gulf Oil Corp.
Louisiana State University, B.S.

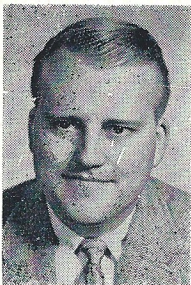


BOLAND LARRY
Amerada Petro. Corp.
University of Kentucky, A.B.



BRIGGS, KERRY S.
Arkansas Fuel Oil Corp.
University of Texas, B.S.

BROWN, OLIN T.
Miss. Southern Collige
Ohio State Univ. A.B.; Colgate
Univ. M. A.; Cornell Univ. Phd.



BROWNING, W. FLEMING, JR.
Shell Oil Co.
University of Virginia, B.A. & M.S.



CARL, JOSEPH B.
The California Co.
University of Alabama, B.S.
University of Oklahoma, M.S.



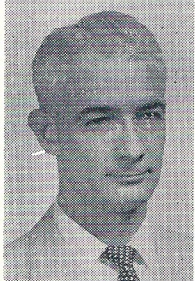
BRUCE, C. H.
Magnolia Petroleum Co.
University of Kentucky, M.S.



CHAMPLIN, CHARLES
Pan American Petro. Corp.
Oklahoma State University, B.S.



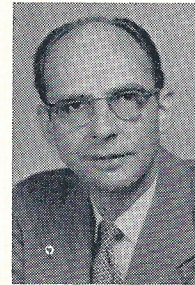
CALDWELL, ELEANOR T.
Humble Oil & Refining Co.
Smith College, M.A.



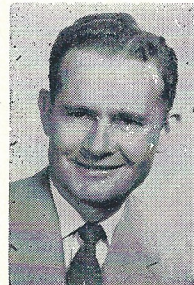
CHEESMAN, BEYNON S.
Norton Oil Co.
Centenary College
Louisiana State University, B.S.



CLARDY, ARTHUR L., JR.
Humble Oil & Refining Co.
University of Houston, M.S.



COLE, R. C.
Shell Oil Co.
Missouri School of Mines, B.S.



CLARK, GLENN E.
Hycalog Co., Inc.
Ouachita College
University of Arkansas
University of Wisconsin



COOK, D. E.
Gulf Oil Corp.
Texas A & M College
University of Pittsburgh
University of Alabama



CLARK, ROBERT S.
Phillips Petroleum Co.
University of Missouri, A.B. & M.A.



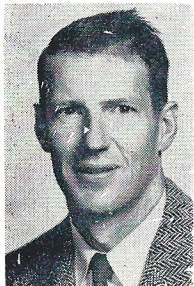
COPELAND, R. G.
Consulting Geologist
University of Oklahoma, A.B.



CRAFT, W. E.
Pan American Petro. Corp.
Mississippi State College, B.S.



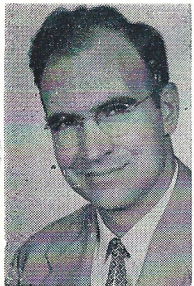
CURVIN, BERNARD A.
Pan American Pet. Corp.
University of Illinois B. S.



CULBERTSON, VERNE L.
Skelly Oil Co.
Iowa State College, B.S.



CUSATOR, JAMES A.
Core Laboratories, Inc.
Jamestown College
University of Texas, B.S.



CULLIGAN, L. B.
The California Co.
Birmingham-Southern, B.S.
University of Colorado, M.S.



DAVIS, GENE O.
Sinclair Oil & Gas Co.
University of Kansas City, B.S.

DeVRIES, DAVID A.
Miss. Southern College
University of Wisconsin, Ph. D.

DOUGLAS, JOHN G.
Student
University of Miss.



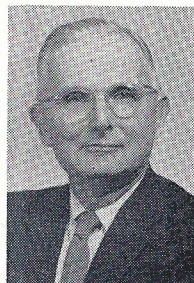
DONALDSON, DAVID A.
American Petrofina Co. of Texas
University of Texas, B.S.



DUBY, BRYAN A.
Carter Oil Co.
Louisiana State University, B.S.



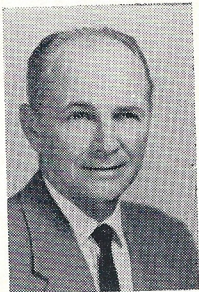
DORNBUSCH, WILLIAM K., JR.
Corp. of Engineers, WES
Mississippi State College, B.S.



DUNN, P. H.
Miss. State College
Miami University, A.B.
Ohio State, M.A.
University of Chicago, Ph. D.



EDDINGTON, RONALD C.
Pan American Petro. Corp.
Stanford University, M.S.



ELLIOTT, T. R.
Sinclair Oil & Gas Co.
University of Oklahoma



FANO MANUEL O.
Pan American Petro. Corp.
Columbia University, B.S.



FITZGERALD, PAUL E.
Honolulu Oil Corp.
Mississippi State College, B.S.



EHRHARDT, HENRY L.
Tidewater Oil Co.
University of Houston, B. S. & M. S.



ELROD, DONALD E.
Carter Oil Co.
Centenary College, B.S.



FARLEE, RICHARD W.
Shell Oil Co.
Princeton University, B.S.



FORWARD, FRED
Phillips Petroleum Co.
University of Colorado, M.A.

*Revised
1961*



EISENSTATT, PHILLIP
Shell Oil Co.
University of Nebraska, B.S.



EWING, RUDY V.
Dixie Geological Service
University of Oklahoma, B.S.



FERRISS, T. M., JR.
Sinclair Oil & Gas Co.
Louisiana State University, B.S.



FRANCIS, H. L., JR.
Carter Oil Company



FRANKLIN, DON T.
Continental Oil Co.
University of Nebraska, B.S.



FRY, CHARLES H.
~~Seaboard Oil Co.~~
University of Oklahoma, B.A.

cf. Nebraska



GIFFORD, DONALD G.
Seaboard Oil Co.
Kent State University, B.S.

Ana Pet



GOODRICH, DONALD L.
The California Co.
Michigan State University, M.S.



FRASCOGNA, XAVIER M.
Pan American Petro. Corp.
Louisiana State University, B.S.



FURRH, JAMES B., JR.
The Ohio Oil Co.
University of Texas, B.A. & B.S.



GILREATH, J. A.
Schlumberger Well Surveying Corp.
Ga. Institute of Technology, B.E.E.



GOODWIN, JACK G.
Seaboard Oil Co.
Texas Christian University, B.A.



FRISBY, RAYMOND L.
The Ohio Oil Co.
University of Oklahoma, B.S.



GIFFIN, CHARLES G.
Schlumberger Well Surveying Corp.
Ga. Institute of Technology, B.E.E.



GOLDTHWAITE, DUNCAN
The California Co.
Oberlin College, B.A.
Harvard University, M.A.



GULMON, G. W.
Consulting Geologist
University of North Dakota, B.A.
Texas A & M College, M.S.



HARRELL, D. C.
Consulting Geologist
University of Texas, B.A.



HART, LOREN M.
Cities Service Oil Co.
Kansas State College, B.S.



HEWITT, REX
Arkansas Fuel Oil Corp.
University of New Mexico, B.S.

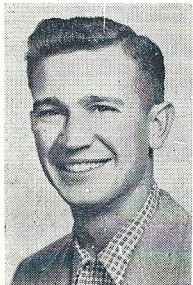


HORSTMAN, E. L.
The California Co.
University of Minnesota, Ph. D.

Elmer



HARRELL, MRS. OLETA
Consulting Geologist
University of Texas, B.A. & M.A.



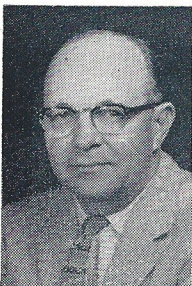
HENDERSON, EDWARD J.
Amerada Petroleum Corp.
Newberry College
University of South Carolina, B.S.
Johns-Hopkins University



HINES, E. R., JR.
Seaboard Oil Co.
Texas Tech. College, B.S.



HORTON, MARVIN D.
The California Co.
University of Nebraska, M.S.



HARRIS, R. MERRILL
Consulting Geologist
University of Oklahoma B. S.

HERRON, RICHARD H.
Student
Mississippi Southern College



HINSON, EARL, JR.
Carter Oil Co.
Baylor University, B.S.



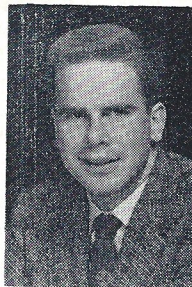
HOUSTON, CHARLES A.
Pan American Petro. Corp.
University of Oklahoma, B.S.



HUGHES, DUDLEY J.
American Petrofina Co. of Texas
Texas A & M College, B.S.



HUNT, H. ROBERT
The California Co.
Williams College, B.A.
California Institute of Tech., M.S.



IRVING, ROBERT E.
Sinclair Oil & Gas Co.
Lehigh University, B.S.



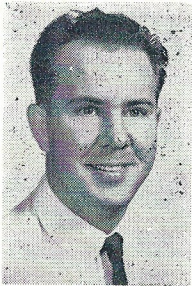
JOHNSON, ROBERT K.
Magnolia Petroleum Co.
University of Oklahoma, M.A.



HUGHES, L. GRAHAM
Sinclair Oil & Gas Co.
Louisiana State University, B.S.



HUTTO, O. D.
Shell Oil Co.
University of Houston, B.S.



JACOBS, ROBERT R.
Union Producing Co.
Michigan State College, B.S.



JOHNSON, WENDELL B.
Millsaps College
Kansas State College, M.S.



HUMPHRIS, CURTIS C., JR.
The California Co.
Washington & Lee University, B.S.
Ohio State University, M.S.

IRVING, JOHN W.
Student - Miss. State College
Mississippi Southern College, B.S.



JEFFREYS, E. G.
Consulting Geologist
Colorado School of Mines B.S.



JOHNSTON, CARL H.
Gulf Oil Corporation
University of Alabama, B.S.
University of Texas, M.A.

JONES, M. P.
Exploration Surveys, Inc.
Southern Methodist Univ., B.S.



KARGES, HAROLD E.
Consulting Geologist
Texas Christian University, B.A.



KEARY, K. B.
Consulting Geologist
Mississippi State College, B.S.



KEBERT, F. DEAN
The California Co.
University of Missouri, M.A.



KEENE, KATHERINE H.
Humble Oil & Refining Co.
University of Kansas, B.S.



KIRBY, M. F.
Gulf Oil Corp.
Louisiana State University, B.S.



JONES, SARGENT F., II
Gulf Oil Corp.
Tulane University, B.S.



JONES, WALTER B.
Geological Survey of Ala.
University of Alabama, A.B. & A.M.
Johns-Hopkins University, Ph.D.



KERN, MARSHALL K.
Pan American Petro. Corp.
Millsaps College, B.S.



KINGRY, H. J., JR.
Sinclair Oil & Gas Co.
Colorado School of Mines, G.E. University of Wyoming, B.A. & M.A.



KNEEDLER, E. PAUL
Consulting Geologist
University of Kansas City, B.A.



KNIGHT, WILBUR H.
Larco Drilling Co.



KOLB, CHARLES R.
Waterways Exper. Station
Louisiana State University, M.S.



LADNER, HILTON L.
Consulting Geologist
Mississippi State College, B.S.



LARA, ROLANDO
Chevron Oil Co.
University of Oklahoma, B.S.



LINDSAY, J. L., JR.
Pan American Petro. Corp.
Washington University, St. Louis

KRALIS, DAN
Clark Oil & Refining Corp.
Univ. of Indiana, A.B.

LANDES, ELDEN E.
Waterways Exper. Station
Oklahoma State University, B.S.

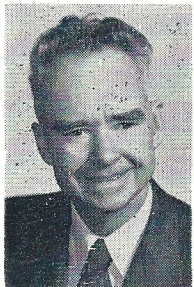


LAUNIUS, EDWARD B.
Consulting Geologist
Centenary College, B.S.

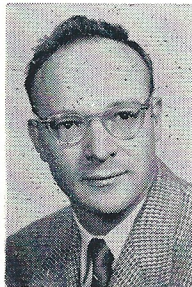


LOPEZ, A. J.
Shell Oil Co.
Texas A & M College, B.S.

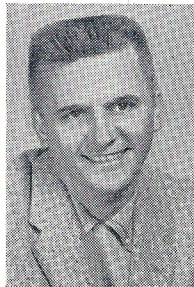
KYZAR, JOHN, JR.
Humble Oil & Refining Co.
Mississippi State College, B.S.



LANG, JOSEPH W.
U.S. Geological Survey
Texas Tech. College, B.S.



LEONARD, ARNOLD D.
Shell Oil Co.
Penn. State College, B.S. & M.S.



LUCAS, DENNIS R.
The California Co.
University of Indiana, M.S.



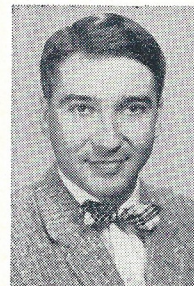
LUKE, PAUL
Shell Oil Co.
Mississippi State College, B.S. Southwest Louisiana Institute, B.S.



LUTZ, M. C.
Tidewater Oil Co.
Southwest Louisiana Institute, B.S.



MAGNUSON, HELMER L.
The California Co.
University of Kansas, B.S.



MANN, JOHN C.
The California Co.
University of Kansas, B.S. & M.S.



LUKERT, JOHN F.
Cities Service Oil Co.
University of Kansas, B.S.



LYNCH, WILLIAM D.
The California Co.
Yale University, M.S.



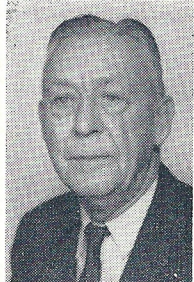
MAIN, T. TALMAGE, JR.
Sun Oil Co.
University of Texas, B.B.A.
Texas Tech. College, M.S.



MARK, CHARLES J.
Phillips Petroleum Co.
Rutgers University, B.S.



LUSK, TRACY W.
Miss. Geological Survey
University of Mississippi, B.S. & M.S.



MABREY, RONALD
Waterways Exper. Station
Missouri School of Mines and
Metallurgy B.S.



MALTBY, JAY W.
Baroid Division - Nat'l. Lead Co.
Texas Tech. College



MARSHALL, JOHN H., JR.
Magnolia Petroleum Co.
University of Missouri, B.A. & M.A.



MARTIN, R. E.
Gulf Oil Corp.
Millsaps College, B.S.
Mississippi State College, M.S.



MAXWELL, ROBERT L., JR.
Magnolia Petroleum Co.
Tulane University, B.S.



McDANIEL, C. M., JR.
Atlantic Refining Co.
University of Texas, B.B.A.



McGARRY, WILLIAM A.
Pan American Petro. Corp.
St. Louis University, B.S.



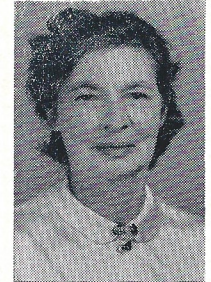
MATHER, BRYANT
Corps of Engineers, WES
Johns-Hopkins University, A.B.



McCLELLAND, CHARLES S.
The California Co.



McELROY, J. R.
The California Co.
University of Colorado, M.S.



McGLAMERY, MISS WINNIE
Alabama Geological Survey
University of North Carolina
Goucher College, A.B.
Johns-Hopkins University



MATHER, MRS. KATHARINE
Corps of Engineers, WES
Bryn-Mawr College, A.B.
Johns-Hopkins University



McCORMICK, WADE L.
Carter Oil Co.
Mississippi State College, B.S.
University of Illinois, M.S.



McFARLAND, L. R.
Magnolia Petroleum Co.
University of Kansas, B.S.



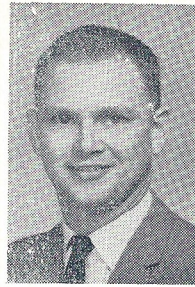
McWILLIAMS, GEORGE R.
The Texas Company
University of Pittsburg, M.S.



McWILLIAMS, JOHN F.
Union Producing Co.
Lou's'ana State University, B.S.



MIDDENDORF, ROBERT P.
Shell Oil Co.
University of Cinc'nmati, B.S. & M.A.



MINIHAN, EDWARD D.
Amerada Petroleum Corp.
Oklahoma State University, B.S.



MORRIS, RICHARD L.
Schlumberger Well Surveying Corp.
University of California, B.S.



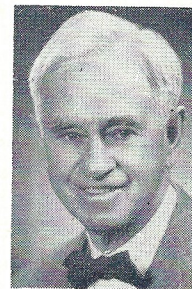
MELLEN, FREDERIC F.
Consulting Geolog'st
Mississ'ppi State College, B.S.
University of Mississ'ppi, M.S.



MIESSE, MAURICE E.
Phillips Petroleum Co.



MONSOUR, EMIL
Sun Oil Co.
Louis'ana State Univ. B.S. & M.S.



MORSE, WILLIAM C.
Mississippi Geological Survey
Ohio State Univ., B.A. & M.A.
University of Chicago
Mass. Institute of Tech. Ph. D.



MICHAEL, JAMES F.
Consulting Geolog'st
University of Oklahoma, B.S.



MILLER, DEAN M.
Southern States Oil Co.
University of Kansas, B.S.



MOORE, WILLIAM H.
Shell Oil Co.
Millsaps College, B.S.
Emory University, M.S.

MOYNIHAN, JAMES
McCullough Tool Co.
Miss. Southern College, B.S.



MYERS, M. DALE
Consulting Geologist
University of Wichita, B.A.



NELSON, ROBERT L.
Pan American Petro. Corp.
Williams College, B.A.
Calif. Institute of Tech. M.S. & Ph. D.



NUGENT, WILLIAM J.
Drilling & Exploration Co., Inc.
Texas Tech. College, B.S.

OLIVER, WILLIAM B.
Humble Oil & Refining Co.
Mississippi State College, B.S.



NEIL, ROBERT A.
Pan American Petro. Corp.
Ohio State College, B.S.



NEWSOM, MAX
Gulf Oil Corp.
Texas A & M College, B.S.



OFFENHISER, JOHN J.
Shell Oil Co.
University of Illinois, B.A.



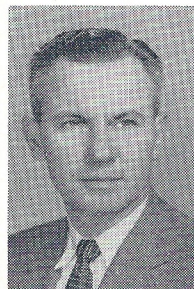
OTTS, J. A., JR.
Gulf Oil Corp.
Centenary College



NEILL, ROBERT M.
Jones Co. Junior College
Mississippi State College, B.S.



NORMAN, M. E.
Consulting Geologist
Texas Christian University, B.S.



OGDEN, W. WESLEY
Shell Oil Co.
University of Texas, B.A.



OYLER, JACK D.
Arkansas Fuel Oil Corp.
University of Wichita, B.S.



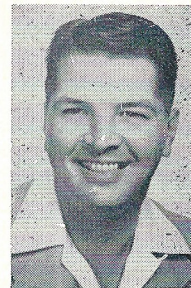
PAGE, JOHN M.
Magnolia Petroleum Co.
University of Kansas, B.S.



PERKINS, JAMES M.
Magnolia Petroleum Co.
Colorado School of Mines, Geol. E



PHILLIPS, MORTON M.
Gulf Oil Corp.
University of Tulsa, B.G.



PLAYER, JOHN, JR.
Consulting Geologist
University of Colorado, B.A.



PAULL, DONALD E.
Pan American Petro. Corp.
University of Wisconsin, B.S.

PETROUTSON, PETER C.
Merchants National Bank, Mobile
Colorado School of Mines, P.E.



PHILLIPS, ROBERT R.
Consulting Geophysicist
University of Mississippi
Louisiana State University, B.S.



PLAYER, WILLIAM H.
Schlumberger Well Surveying Corp
Ga. Institute of Technology, B.E.E.



PERKINS, JAMES G.
The Texas Company
Millsaps College, B.S.
University of Houston



PHILLIPS, JACK
Cities Service Oil Co.
University of Texas, B.S.



PITTS, SHELBY D.
Exploration Surveys, Inc.
Cotiah-Lincoln Jr. College



PLOCH, BEN W.
Skelly Oil Co.
University of Kentucky, B.S.



PLOCK, L. B.
Gulf Oil Co.
University of Indiana, B.S.



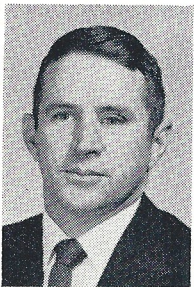
POWELL, L. C.
The California Co.
University of Kentucky, B.S.



PROCTOR, JIMMY
Rinehart's
Mississippi State College, B.S.



RAMSDEN, CHARLES H.
The California Co.
University of California, A.B.



PORTER, C. E.
Shell Oil Co.
University of Texas, B.S. & M.A.



PRESCOTT, RICHARD H.
Gulf Oil Corp.
Louisiana State University, B.S.



PULLIAM, JAMES M.
Sun Oil Co.
University of Missouri, M.A.



RAY, SAM B.
Larco Drilling Co.
University of Houston, B.S.



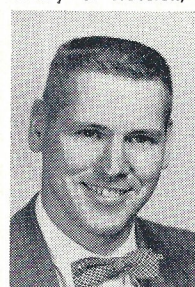
PORTER, JOHN S.
The California Co.
University of Kansas, B.S.
University of Illinois, M.S.



PRIDDY, RICHARD R.
Millsaps College
Ohio Northern, B.S.
Ohio State University, M.S. & Ph.D.



RAMSDELL, J. A.
Continental Oil Co.
Colorado School of Mines, B.S.



REESE, JOHN R.
The California Co.
Purdue University, B.S.
California Institute of Tech., M.S.



RICCI, ARMANDO T., JR.
Magnolia Petroleum Co.
Trinity College, B.S.
Kansas State College, M.S.



RINGENBERG, LESTER J.
Lion Oil Company
University of Nebraska, A.B.



RUSSELL, EDWARD C.
Core Laboratories, Inc.
Illinois Institute of Tech., B. S.



ST. JOHN, FORDYCE B., JR.
Carter Oil Co.
Princeton University, B.A.

RICE, E. M.
Trowbridge Sample Service
New Mexico School of Mines
Texas Christian University



ROBINSON, W. J.
Sinclair Oil & Gas Co.
University of Tulsa, B.S.

RUSSELL, ERNEST E.
Mississippi State College
University of Tennessee B.S.
Mississippi State College, M.S.

SANDERSON, BOBBY JOE
Student
Miss. Southern College



RIDGWAY, LOUIS E., JR.
Ridgway & McGee
University of Mississippi, B.S.



ROSS, E. McIVER, JR.
Amerada Petroleum Corp.
University of Oklahoma, B.S.



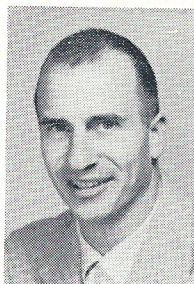
RUSSELL, TED R.
Atlantic Refining Co.
Centenary College, B.S.



SCURLOCK, RAY
Gulf Oil Corp.
Texas A & M College, B.S.



SHAMBURGER JOHN H.
Waterways Exper. Station
University of Mississippi, B.S.



SIEGMUND, JOE
The California Co.
University of Nebraska, B.S.



SKEES, W. A.
Pan American Petro. Corp.
Texas Western College



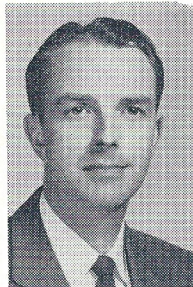
SMITH, CLAUDE D.
Union Producing Co.
Louisiana State University, B.S.



SHELTON, M. F., JR.
Union Producing Co.
Northeast Louisiana St. College, B.S.

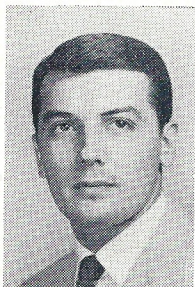


SIMS, RICHARD D.
Seaboard Oil Co.
University of Georgia, B.S.



SKINNER, JACK D.
Vaughey & Vaughey
University of Houston
University of Mississippi

SMITH, WILLIAM H.
Mississippi State College
Texas Tech. College, B.S.
Louisiana State University, M.S.



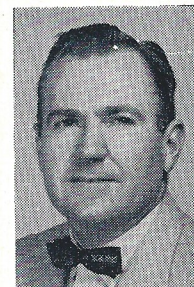
SHERMAN, JERRY G.
Consulting Geologist
University of Alabama, B.S.



SISTRUNK, WALTER E.
Independent Oil Operator
Shattuck Military Academy



SMITH, BAXTER L.
Sun Oil Co.
Southern Methodist University, B.S.



SOMMERS, CHARLES R.
Gulf Oil Corp.
Millsaps College
Mississippi State College, B.S.

FI 452212



SPAULDING, B. B.
The Texas Co.
University of Illinois, B.A.
University of Missouri



STEVENS, RAY E.
Shell Oil Co.



SULLIVAN, JAMES G., JR.
Union Producing Co.
Louisiana State University, B. S.



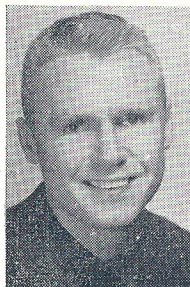
TALLEY, GILBERT A.
Lion Oil Co.
St. University of Iowa, B.A. & M.S.



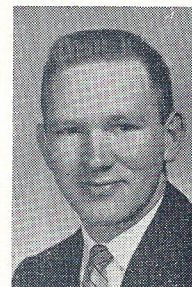
STEELE, L. B.
Gulf Oil Corp.
University of Alabama
Millsaps College



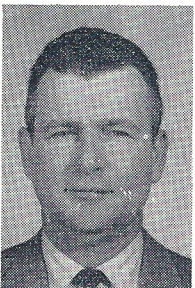
STINSON, WILLIAM D.
Lion Oil Co.
Texas Christian University, B.A.
University of Texas, M.A.



SUSONG, BRUCE L.
The California Co.
Miami University
University of Illinois, M.S.



TAYLOR, ROY O.
The California Co.
University of Missouri, M.A.



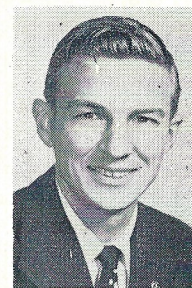
STEINRIEDE, W. B., JR.
Corps of Engineers
Mississippi State College, B. S.



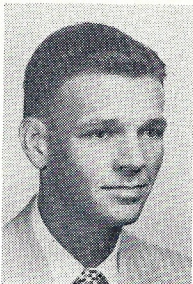
SULLINS, JAMES A.
Gulf Oil Corp.
Centenary College



SYKES, OTTO T., JR.
Gulf Oil Corp.
Centenary College, B.S.



TAYLOR, W. E.
Union Producing Co.
University of Indiana, B.S. & M.S.



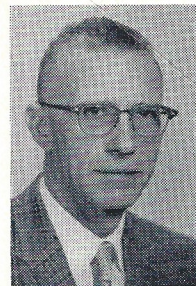
TEAGUE, A. T., JR.
Pan American Petro. Corp.
University of Arkansas, M.S.



THOMAS, JOHN M.
Cities Service Oil Co.
University of Pittsburgh, M.S.



TILLMAN, T. H.
Sun Oil Co.
University of Oklahoma, B.S.



TUCKER, JAMES J.
Sun Oil Co.
University of Texas, B.S.



TENCH, ROBERT N.
Shell Oil Co.
Iowa State College, B.S. & M.S.



THORNTON, WILLIAM J.
The Texas Co.
University of Kentucky, B.S.

*Transfer
to
New
Orleans*



TOLER, HENRY N.
Consulting Geologist
Louisiana State University, B.S.

TURNER, WILLIAM P.
Amerada Petroleum Corp.



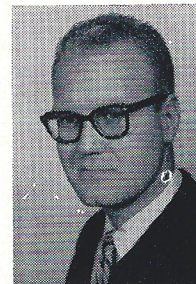
THOMAS, GEORGE T.
The Ohio Oil Co.
Texas Tech. College, B.S.



TILLACK, WILLIAM E.
Gulf Oil Corp.
Louisiana State University, B.S.



TROEGEL, WALTER, JR.
J. Willis Hughes
Louisiana State University, B.S.



VAN LOPICK, JACK R.
U.S. Engineers
Michigan State College
La. State Univ. B.S., M.S., & Ph. D.



VIOLETTE, R. T.
Pan American Petro. Corp.
University of Kentucky, B.S.



WALLACE, JOHN J.
The California Co.
Colorado School of Mines, Geoph. E.



WALSINGHAM, W. A.
Consulting Geophysicist



WATTS, G. L.
The California Co.
University of Oklahoma, B.S.

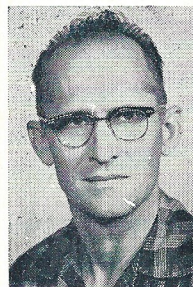


WEAVER, JOHN C.
Pan American Petro. Corp.
University of Arkansas, B.S.

WARE, HOLMES K.
Hycog, Inc.
Louisiana Polytechnic Inst., B.S.



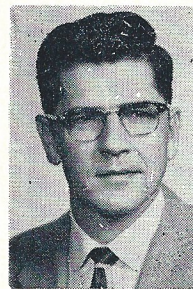
WEBSTER, FELIX H.
Sinclair Oil & Gas Co.
Louisiana State University, B.S.



WEIGL, KARL E.
Shell Oil Co.
University of Wichita, B.S.



WELCH, STEWART W.
Shell Oil Co.
Oklahoma State University, B.S.



WHATLEY, ARTHUR F.
Gulf Oil Corp.
Millsaps College, B.S.
Mississippi State College, M.S.

WHITAKER, DON E.
Continental Oil Co.
Oklahoma State University, B.S.



WHITE, GEORGE R.
Sinclair Oil & Gas Co.
University of Tennessee, B.A.



WHITE, HAROLD R.
Milner-White Oil Co.
University of Illinois, B.S. & M. S.



WILDER, C. B.
Cities Service Oil Co.
University of Houston, B.S.



YOUNG, GEORGE M.
M. R. Young Drilling Co.
Washington & Lee University, A.B.

WOMACK, ROBERT, JR.
Consulting Geologist
University of Oklahoma, B.S.



WHITE, J. L.
Sinclair Oil & Gas Co.
Mississippi State College, B.S.



WILSON, FRANK S.
Gulf Oil Corp.
University of Tulsa, B. A. & M. S.



WOODHAMS, RICHARD L.
Atlantic Refining Co.
University of Michigan, A.B.



ZACHMAN, RICHARD R.
Pan American Petro. Corp.
Kansas State College, B.S.



WIGGINS, MARVIN E., JR.
Consulting Geologist
Mississippi State College, B.S.



WOMACK, J. F.
Union Producing Co.
University of Texas, B.S.



WOODS, HARRY K.
Waterways Exper. Station
Millsaps College, B.S.



ZAPPI, MARCOS A.
The Ohio Oil Co.
University of Washington, B.S.

Area GeologistDuncan Goldthwaite
 Marvin D. Horton
 GeologistCurtis C. Humphris, Jr.
 Russell J. Alexander
 D. R. Bergman
 J. B. Carl
 L. B. Culligan
 Donald A. Goodrich
 E. L. Horstman
 F. Dean Kebert
 Helmer Magnuson
 John C. Mann
 J. R. McElroy
 John S. Porter
 Joe E. Siegmund
 Bruce Susong
 Roy O. Taylor
 G. L. Watts
 GeophysicistH. Robert Hunt
 Dennis R. Lucas
 John R. Reese
 John H. Wallace

THE CARTER OIL COMPANY

402 Millsaps Building *EM 69371*
 P. O. Box 1490, Jackson, Miss., Phone 3-1651
 District GeologistFordyce B. St. John, Jr.
 GeologistD. E. Elrod
 Wade L. McCormick
 District GeologistBryan A. DUBY
 GeophysicistEarl Hinson
 District ScoutH. L. Francis

CHEVRON OIL COMPANY

320 North West Street
 Jackson, Miss., Phone 5-2743
 SeismologistR. A. Beam
 Party ChiefRolando Lara

CITIES SERVICE OIL COMPANY

1608 Standard Life Building
 Jackson, Miss., Phone 3-4969
 District GeologistJack Phillips
 GeologistLoren M. Hart
 John Lukert
 J. M. Thomas
 C. B. Wilder

CLARK OIL & REFINING CO.
 B-321 U. S. National Bank Building
 Denver, Colorado

GeologistDan F. Kralis

CONSULTING GEOLOGISTS:

Clyde W. Alexander, 202 Millsaps Building
 P. O. Box 4643, Jackson, Miss., Phone 3-8967
 J. S. Attaya, 100½ West Capital Street
 P. O. Box 3044, Jackson, Miss., Phone 4-1354
 R. G. Copeland, Gulf Hill's
 Ocean Springs, Miss.
 G. W. Gulmon, Fry Building
 P. O. Box 59, Natchez, Miss., Phone 4543
 D. C. Harrell
 1003 Pecan Boulevard, Jackson, Miss., Phone 2-0005
 Mrs. Oleta Harrell
 1003 Pecan Boulevard, Jackson, Miss., Phone 2-0005
 R. Merrill Harris
 3100 Old Canton Road, Jackson, Miss., Phone 6-8934
 E. G. Jeffreys, 509 Plaza Building
 P. O. Box 1634, Jackson, Miss., Phone 3-8548
 Harold E. Karges, 100½ West Capitol Street
 P. O. Box 3044, Jackson, Miss., Phone 4-1354
 K. B. Keary, Suite 17, Eola Hotel
 Natchez, Miss.
 E. Paul Kneedler, 202 Millsaps Building
 P. O. Box 4643, Jackson, Miss., Phone 3-8967
 Hilton E. Ladner, 1121 First National Bank Building
 Jackson, Miss., Phone 4-3616
 E. B. Launius
 4229 Crescent Place, Jackson, Miss., Phone 6-4362
 Frederic F. Mellen, 113½ West Capital Street
 P. O. Box 2584, Jackson, Miss., Phone 5-4541
 James F. Michael, 4534 Meadow Hill Road
 P. O. Box 2151, Jackson, Miss., Phone 6-1067
 M. D. Myers
 1056 Claiborne Avenue, Jackson, Miss., Phone 3-0728
 Nugent, W. J.
 Deposit Guaranty Bank Building, Jackson, Miss.

John Player, 5556 Wayneland Drive
P. O. Box 3177, Jackson, Miss., Phone 6-7604

Henry N. Toler, 1513 Deposit Guaranty Bank Bldg
Jackson, Miss., Phone 2-7607

Marvin E. Wiggins, Jr.
3635 North State Street, Jackson, Miss., Phone 60-1471

Robert Womack, Jr., Deposit Guaranty Bank Building
Jackson, Miss., Phone 3-4650

CONSULTING GEOPHYSICISTS:

Robert R. Phillips, Deposit Guaranty Bank Building
Jackson, Miss.

W. A. Wa'singham
1525 - 14th Avenue, Meridian, Miss.

CONSULTING PETROLEUM ENGINEER:

M. E. Norman, Meadows Building
Dallas, Texas, Phone Emerson 8-1311

CONTINENTAL OIL COMPANY

1101 Standard Life Building
P. O. Box 2607, Jackson, Miss., Phone 4-1507
Geologist Robert N. Arrington
Donald D. Brown
Don T. Franklin
Division Geophysicist J. A. Ramsdell
Scout and Leaseman Don E. Whitaker

CORE LABORATORIES, INC.

403 Beck Building, Shreveport, Louisiana
District Manager James A. Cusator
2136 Paden Street, Jackson, Miss., Phone 3-0924
Sales Engineer Edward C. Russell

DIXIE GEOLOGICAL SERVICE

1201 First National Bank Building
P. O. Box 999, Jackson, Miss., Phone 3-6323
Geologist Rudy V. Ewing

EXPLORATION SURVEYS, INC.

3515 North view Drive
P. O. Box 1404, Jackson, Miss., Phone 66-3350
Vice President M. P. Jones
Shelby D. Pitts

GULF OIL CORPORATION

1020 Milner Building
P. O. Box 1269
Jackson, Miss., Phone 4-5221

District Geologist C. R. Scurlock
District Exploration Geologist M. F. Kirby
Geologist Badir Al Refai
C. G. Bilberry
M. M. Phillips
L. B. Plock
Richard H. Prescott
O. T. Sykes
W. E. Tillack
Frank S. Wilson
District Production Geologist J. A. Otts, Jr.
Assistant District Prod. Geologist Max Newsom
Geologist Carl H. Johnston
R. E. Martin
Charles R. Sommers
James A. Sullens
Arthur F. Whatley
Geophysicist D. E. Cook
S. F. Jones, II
L. B. Steele

HONOLULU OIL CORPORATION

403 Deposit Guaranty Bank Building
Jackson, Miss., Phone 5-441
Division Manager B. W. Allen
Geologist Paul E. Fitzgerald

J. WILLIS HUGHES

1829 Deposit Guaranty Bank Building
P. O. Box 1713, Jackson, Miss., Phone 5-2821
Geologist Walter Troegel

HUMBLE OIL & REFINING COMPANY

P. O. Box 1390, Hattiesburg, Miss.
Phone Juniper 3-2618
Acting Assistant Division Geologist William B. Oliver
Production Geologist John Kyzar
Geologist Donald B. Caldwell
Arthur L. Clarady
Kenneth A. Harlan
James P. Spillers
Paleontologist Ebanor T. Caldwell
Katherine H. Keene

HYCALOG, INC.

607 Millsaps Building
Jackson, Miss., Phone 5-6061

District ManagerGlen E. Clark
District Manager — Diamond
Core Dept., ShreveportH. K. Ware

INDEPENDENT OIL OPERATOR

Walter E. Sistrunk
Century Building, Jackson, Miss., Phone 5-3404

JONES COUNTY JUNIOR COLLEGE

Ellisville, Miss.
Instructor — Dept. of GeologyRobert M. Neill

LARCO DRILLING COMPANY

107 West Pearl Street
P. O. Box 3499, Jackson, Miss., Phone 3-8386
GeologistW. H. Knight
Sam B. Ray

LION OIL COMPANY

1609 Standard Life Building
P. O. Box 3911, Jackson, Miss., Phone 3-3581
Regional Geologist — ShreveportGilbert A. Talley
District GeologistLester J. Ringenberg
GeologistJohn L. Ashman
William D. Stinson

MAGNOLIA PETROLEUM COMPANY

809 Millsaps Building
P. O. Box 3671
Jackson, Miss., Phone 3-1624
District GeologistL. R. McFarland
GeologistCharles E. Brown
C. H. Bruce
Robert K. Johnson
John H. Marshall
James M. Perkins
Armando T. Ricci, Jr.
District GeophysicistJohn M. Page
ScoutRobert M. Maxwell

McCULLOUGH TOOL COMPANY

1153 - 6th Avenue, Laurel, Miss.
James Moynihan

MERCHANTS NATIONAL BANK

Phone Hemlock 8-5471, Mobile Alabama
Petroleum EngineerPeter C. Petroustou

MIDSTATES OIL CORPORATION

714 Plaza Building, Phone 4-1604
Jackson, Mississippi
Division GeologistRoy Benke

MILLSAPS COLLEGE

Jackson, Mississippi
Professor of GeologyDr. R. R. Priddy
Associate Professor of GeologyWendell B. Johnson

MILNER-WHITE OIL COMPANY

840 Milner Building, Phone 2-1621
Jackson, Mississippi
GeologistHarold R. White

MISSISSIPPI GEOLOGICAL SURVEY

University, Mississippi
DirectorDr. W. C. Morse
GeologistTracy W. Lusk

MISSISSIPPI SOUTHERN COLLEGE

Station "A", Hattiesburg, Mississippi
Professor of GeologyDr. O. T. Brown
Dr. David A. DeVries

MISSISSIPPI STATE COLLEGE

State College, Mississippi
Professor of GeologyDr. Paul H. Dunn
Richard Herron
John W. Irving
Ernest E. Russell
Bobby J. Sanderson
William H. Smith

NORTON OIL COMPANY

P. O. Box 1193, Shreveport, La.
GeologistBeynon S. Cheesman

THE OHIO OIL COMPANY
770 Milner Building, Phone 3-4767
Jackson, Miss.

District GeologistGeorge T. Thomas
GeologistG. K. Anderson
Raymond L. Frisby
James B. Furrh, Jr.
Marcus A. Zappi

PAN AMERICAN PETROLEUM CORPORATION
12th Floor, First Nat'l. Bank Bldg., Phone 3-2407
P. O. Box 689
Jackson, Mississippi

Division Consulting Geologist (Shrpt.).....J. D. Aimer
Shreveport, Louisiana
District Exploration SuperintendentC. A. Houston
Corpus Christi, Texas
District GeologistA. T. Teague, Jr.
District GeologistW. A. Skees
GeologistRichard Bowman
Charles Champlin
W. E. Craft
Bernard A. Curvin
Ronald C. Eddington
Xavier M. Frascogna
Marshall K. Kern
Robert A. Neil
Donald E. Paull
R. T. Violette
J. C. Weaver
District GeophysicistDr. R. L. Nelson
GeophysicistW. A. McGarry
William Paxton
District ClerkManuel O. Fano
AdministrativeJ. L. Lindsay, Jr.

PHILLIPS PETROLEUM COMPANY
706 Millsaps Building, P. O. Box 3540, Phone 3-5212
Jackson, Mississippi

Division Manager - Land & Geological Depts.....
Fred Forward
Division GeologistB. D. Bounds
GeologistRobert S. Clark
Charles J. Mark
Division LandmanM. E. Miesse

RIDGWAY and McGEE
233 1-2 East Capt. St., Phone 3-3849
GeologistLouis E. Ridgeway, Jr.

RINEHART'S OIL NEWS CO. OF LOUISIANA
413 Tombigbee Street, P. O. Box 915, Phone 3-4019
Jackson, Miss.

Associate EditorJ. W. Proctor

SCHLUMBERGER WELL SURVEYING CORPORATION
1001 Standard Life Bldg., P. O. Box 2697, Phone 2-8589
Jackson, Mississippi

Sales EngineerC. G. Giffin
District Manager, LaurelJ. A. Gilreath
Division Manager, ShreveportR. L. Morris
District Manager, NatchezW. H. Player

SEABOARD OIL COMPANY
720 Milner Building, P. O. Box 884, Phone 2-0811
Jackson, Mississippi

District GeologistE. R. Hines, Jr.
GeologistCharles H. Fry
Donald C. Gifford
Jack G. Goodwin
R. D. Sims

SHELL OIL COMPANY
528 North State St., P. O. Box 1817, Phone 2-5538
Jackson, Miss.

Division Exploration ManagerW. Wesley Ogden
Division GeologistPhillip Eisenstatt
Senior GeologistR. W. Farlee
GeologistW. F. Browning, Jr.
Arnold D. Leonard
A. J. Lopez
J. J. Offenhiser
C. E. Porter
Karl E. Weigl
Geologist Tuscaloosa, Ala.Stewart W. Welch
Division GeophysicistR. C. Cole
Division StratigrapherEmmett R. Adams
Seismologist AssistantW. A. Allred
Division ScoutRay E. Stevens
ScoutPaul Luke
PaleontologistRobert P. Middendorf
William H. Moore
Robert N. Tench
Senior Engineer - Prod. Dept.O. D. Hutto

SINCLAIR OIL & GAS COMPANY

1330 First Natl. Bank Bldg., P. O. Box 99, Phone 4-4651
Jackson, Mississippi

Asst. Division Manager Gene O. Davis
Division Geologist Charles C. Barber
Geologist T. M. Ferriss, Jr.
L. Graham Hughes
Robert E. Irving
Felix Webster
George R. White
J. L. White
Division Geophysicist W. J. Robinson
Geophysicist T. R. Elliot
H. J. Kingry, Jr.

SKELLY OIL COMPANY

830 Milner Bldg., P. O. Box 1077, Phone 3-4613
Jackson, Miss.

District Geologist Ben W. Ploch
Geologist Charles A. Barton
Verne L. Culbertson

SOUTHERN STATES OIL COMPANY

1312 First Natl. Bank Bldg., P. O. Box 1185, Phone 4-2348
Jackson, Mississippi

Geologist Dean M. Miller

SUN OIL COMPANY

1120 First Natl. Bank Bldg., P. O. Box 850, Phone 3-4729
Jackson, Miss.

District Geologist Emil Monsour
Assistant District Geologist A. E. Blanton
Geologist Harold D. Baker
T. Talmage Main, Jr.
James M. Pulliam
Paleontologist Baxter L. Smith
District Geophysicist T. H. Tillman
Scout J. J. Tucker

THE TEXAS COMPANY

402 Standard Life Bldg., P. O. Box 96, Phone 2-1707
Jackson, Miss.

District Geologist B. B. Spaulding
Geologist G. R. McWilliams
James G. Perkins
W. J. Thornton

TIDEWATER OIL COMPANY

811 Standard Life Building, P. O. Box 1448, Phone 3-3588
Jackson, Mississippi

District Geologist W. M. Adams
Geologist M. C. Lutz
District Geophysicist Henry L. Ehrhardt

TROWBRIDGE SAMPLE SERVICE

515 Yazoo Street, Phone 2-4414
Jackson, Mississippi

Geologist Elmer M. Rice

UNION PRODUCING COMPANY

151 East Griffith Street, P. O. Box 1020, Phone 4-1671
Jackson, Mississippi

District Geologist John F. McWilliams
Geologist Robert R. Jacobs
Claude D. Smith
W. E. Taylor
Geological Scout Murphy F. Shelton
James G. Sullivan, Jr.
J. F. Womack

UNITED STATES GEOLOGICAL SURVEY

1202 1-2 N. State St., P. O. Box 2052, Phone 5-3223
Jackson, Mississippi

Supervising Geologist - Fuel Branch Esther R. Applin
Geologist - Fuel Branch Paul L. Applin
District Geologist - Water Resources Div. J. W. Lang

UNIVERSITY OF MISSISSIPPI

University, Mississippi

John G. Douglas

VAUGHEY AND VAUGHEY

4001 Northview Drive, Phone 6-5231

Jack D. Skinner

WATERWAYS EXPERIMENT STATION

P. O. Box 2131, Jackson, Miss.

Bryant Mather, Mrs. Katherine Mather.
P. O. Box 631, Vicksburg, Miss.

William K. Dornbusch, Jr. John H. Shamburger
Charles R. Kolb W. B. Steinriede, Jr.
Elden E. Landes Jack R. Van Lopik
Ronald Mabry Harry K. Woods

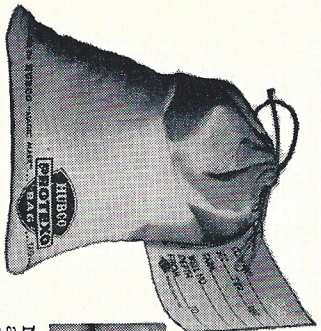
MARSHALL R. YOUNG DRILLING CO.

Brookhaven, Miss.

George M. Young

HUBCO

means * **SAFE CONDUCT**
for Samples from Rig to Lab . . .

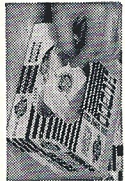


Use HUBCO sand sample bags for safe arrival at the laboratory with contents and markings intact.

Herbie Hubco says INSIST ON



NEW Handy Pack at oil field supply jobbers and dealers. Or mail the coupon for free sample, price list and dealer's name.



***WEBSTER "SAFE CONDUCT" that which assures a safe passage* . . .**

- **PROTEXO BAGS**
- Strong
- Sift-Proof
- Geolagist-Designed
- Highest Quality Cambritic Cloth
- **MAGIC-MARK TAGS**
- Water-Resistant
- Mildew-Proof
- Guaranteed to keep even ordinary pencil markings legible

Hutchinson Bag Corp.
Hutchinson, Kansas
Send sample and information to:

NAME

ADDRESS

The Handful of Sand That Can Cost You Thousands of Dollars

... the sand sample that can't be identified when it reaches the lab—the sample that could influence decisions concerning future development of an entire field—the sample that is lost forever—because of a faulty container.

Sand samples are important. A purchaser is willing to pay the two dollars it costs to take each sample because samples provide vital information. Yet up to 25% of the samples caught are thrown away because of every eight dollars invested in the collection of samples is an outright loss. It also means that 25% of this vital information is forever unavailable. It doesn't pay to use inferior sample bags.

We'd like to tell you the whole story behind HUBCO Protexo Bags. For more information and a sample, mail in the coupon.

Have You Obtained Your Copy of The New Oil Field Reference Book?

MESOZOIC-PALEOZOIC PRODUCING AREAS OF MISSISSIPPI AND ALABAMA

Volume 1, 1957

154 pages, 57 maps of the individual oil and gas fields, 2 composite, columnar sections, 1" x 11¼" x 8¾", hard covers. Price: \$12.50 plus 16c postage



For this and other Mississippi Geological Society publications, write

MISSISSIPPI GEOLOGICAL SOCIETY

P. O. Box 2253

West Jackson 7, Mississippi

BE SURE TO
SPECIFY GEOLOGRAPH,
THE ORIGINAL WELL
LOGGING INSTRUMENT

**Geograph South Louisiana
Service Company**

6523 Choctaw Drive - - Baton Rouge, Louisiana
Phone DIckens 3-2251
R. G. WISE, Sales & Service Manager



HYCALOG

WELL LOGGING

SPECTRA-SCAN

GAS CHRONOFAC

DIAMOND DRILL BITS

DIAMOND CORING BITS

CARBIDE ROD
WASHOVER SHOES

Hycalog, Inc.

505 AERO DRIVE
SHREVEPORT, LOUISIANA

A. W. Williams Drilling Co., Inc.

P. O. Box 314 - Mobile, Alabama

Phone HEmlock 8-3691

P. O. Box 9993 - Jackson, Miss.

Phone 6-9674

Neely Blue Print & Supply Co.

Drafting Supplies

Photostats — Direct Line Prints

220 W. Pearl St. Jackson, Miss.

Phone 4-3523

Milner-White Oil Company

MILNER BUILDING
JACKSON, MISSISSIPPI

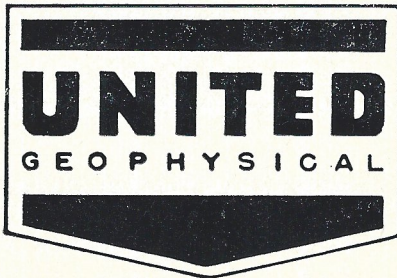
R. E. Dumas Milner - Harold R. White

Julian P. Alexander, Jr.

Harold R. White, Geologist & Manager

PHONE 2-1621

— OIL PRODUCER —
— EXPLORATION DRILLING —



Edgar Tobin Aerial Surveys

San Antonio, Texas

Engineering Service Civil Engineers and Surveyors

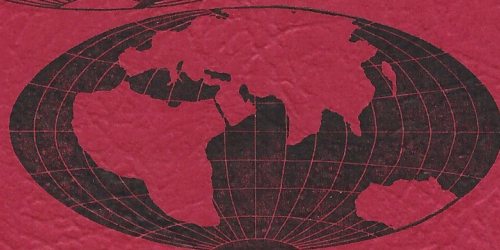
Fulton S. Mills

James T. Gibson

Telephone 3-6221

101 E. Pearl St. - Jackson, Miss.

Worldwide Geophysical Service



Delta's crews have experience in geophysical work in all parts of the world and under all kinds of circumstances. They have worked in Gulf Coast waters, in the marshes of Louisiana, in the mountain areas of Western United States and in Canada, in the gumbo mud of Turkey, on the desert sands of Bahrain, in the tropical jungles of Trinidad, in all extremes of weather and conditions. This background of efficient field work throughout the world has made Delta a symbol of dependability in the geophysical industry.



DELTA EXPLORATION COMPANY, INC.
DELTA-WESTERN EXPLORATION CO., INC.
Jackson, Miss.



REPRODUCTION SUPPLIES
DIRECT PRINT PAPER
AND MACHINES



—o—
Dupont Seismograph Papers & Chemicals

—o—
Hamilton Drafting Room Equipment

—o—
Bausch and Lomb Microscopes

—o—
Ridgway's

Architects and Engineering Supplies

—o—
Blue-Prints, Photo-Copies and Film Work

—o—
South's Most Complete Electrical Log File

—o—
Outstanding Courtesy and Service

Ridgway's
L. L. RIDGWAY COMPANY, INC.

103 East Pearl Street

Jackson, Miss.

TELEPHONE 5-4751